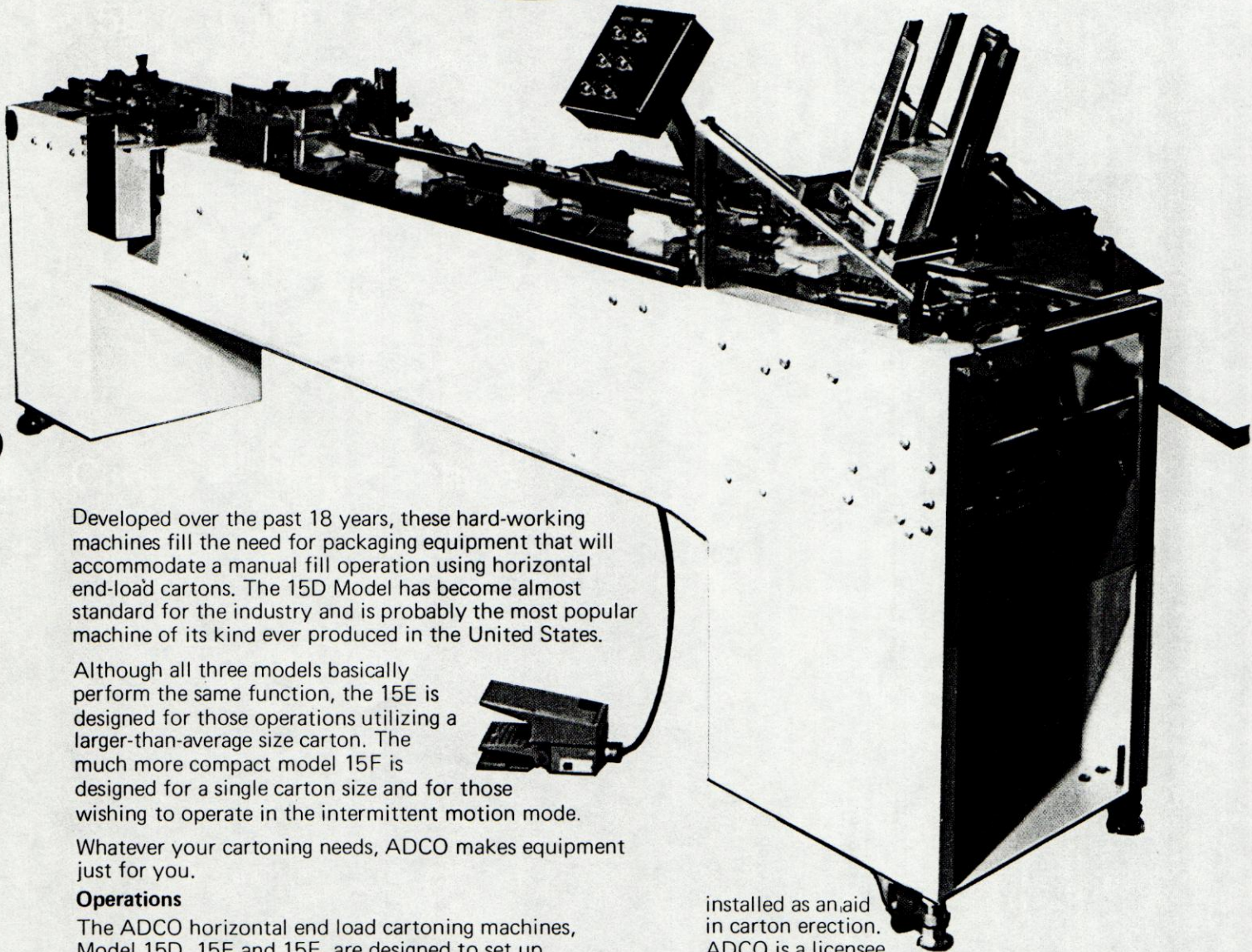


*We put the speed in  
slow-speed packaging.*



Developed over the past 18 years, these hard-working machines fill the need for packaging equipment that will accommodate a manual fill operation using horizontal end-load cartons. The 15D Model has become almost standard for the industry and is probably the most popular machine of its kind ever produced in the United States.

Although all three models basically perform the same function, the 15E is designed for those operations utilizing a larger-than-average size carton. The much more compact model 15F is designed for a single carton size and for those wishing to operate in the intermittent motion mode.

Whatever your cartoning needs, ADCO makes equipment just for you.

#### **Operations**

The ADCO horizontal end load cartoning machines, Model 15D, 15E and 15F, are designed to set up horizontal end load cartons. The flat blanks are loaded into the carton hopper and then pulled from the hopper. This "pulling" process, in combination with bars or brushes erects the carton and positions it positively in the flight lugs. In applications where needed, the Container Corporation of America patented "Air Frame" can be

installed as an aid in carton erection. ADCO is a licensee for the "Air Frame" and has installed it with great success. After the product has been inserted the filled carton is moved to the closing section where the carton can be closed or sealed by a variety of methods. After the carton is closed or sealed it is discharged from the machine ready for case packing.



3544 SOUTH ACADEMY / SANGER, CALIFORNIA 93657 / TELEPHONE (209) 875-5563



## FEATURES AND SPECIFICATIONS.

### Standard Features

- Epoxy coated unitized formed steel frame with levelers and casters
- Vari drive motor - ¾ Horsepower TEFC Drive Motor
- Heavy duty vacuum pump - 1/3 Horsepower TEFC Vacuum Motor
- Quick adjustability in all 3 dimensions
- Main drive slip clutch (continuous motion models only)
- Fully adjustable hopper
- Intermittent motion drive (15F only)
- USDA Approval

### Closure Methods

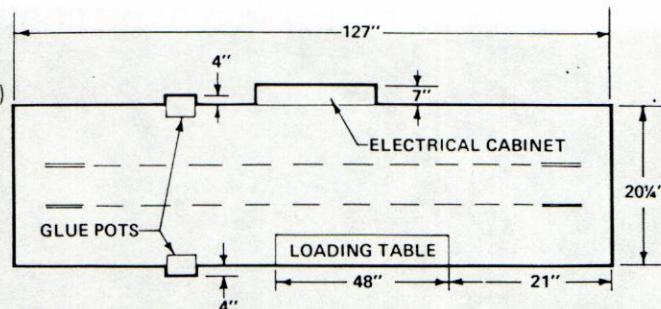
- ADCO Hot Melt System (wheel applicators)
- ADCO Heat Seal System (hot air)
- All tuck closures
- All other manufactured Hot Melt, Heat Seal or Cold Glue Sealing Systems

### Speeds

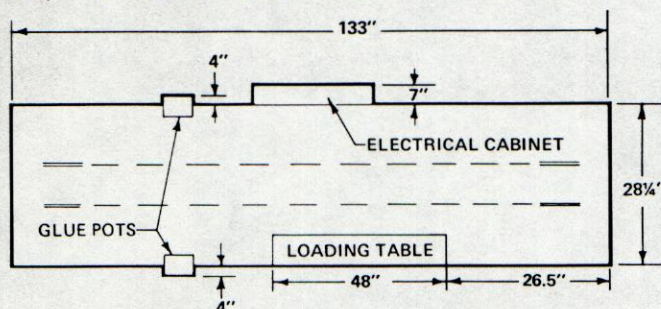
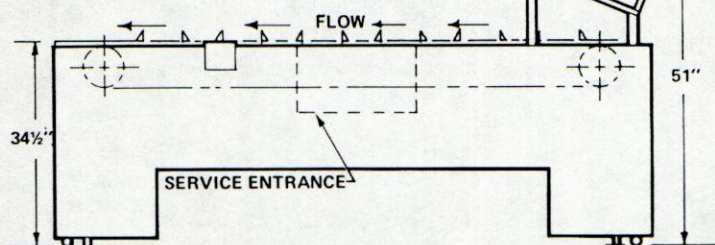
15 to 90 Cartons per minute  
Dependent on carton size, product configuration and operator dexterity.

### Electrical

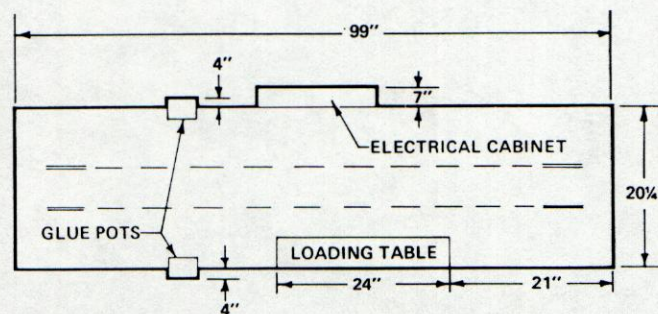
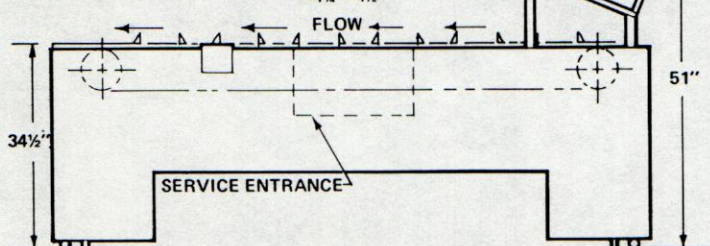
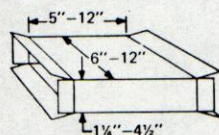
220-440 3 phase 50-60 cycle power  
Magnetic Starter for all drives  
110 Voltage on control circuits  
10 amp load - Tuck Closure (Total Machine)  
15 amp load - ADCO Hot Melt System (Total Machine)  
35 amp load - ADCO Heat Seal System (Total Machine)



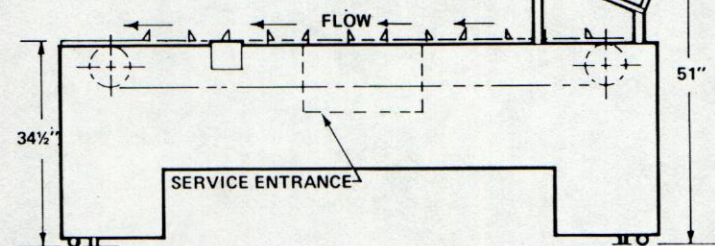
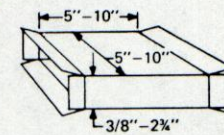
**MODEL 15D**  
is adjustable  
for carton  
size range:



**MODEL 15E**  
is adjustable  
for carton  
size range:



**MODEL 15F**  
is adjustable  
for carton  
size range:



### Options

- Stainless Steel Frame
- ADCO Deboss or Ink Coders
- Special carton size and configuration modifications



*...the people who put the  
speed in slow-speed packaging.*

ADCO MANUFACTURING, INC.

3544 SOUTH ACADEMY / SANGER, CALIFORNIA 93657 / TELEPHONE (209) 875-5563

**Packaging - Processing**  
**Bid on Equipment**

1-847-683-7720

www.bid-on-equipment.com



# MODEL 15-D CARTON CLOSING MACHINE



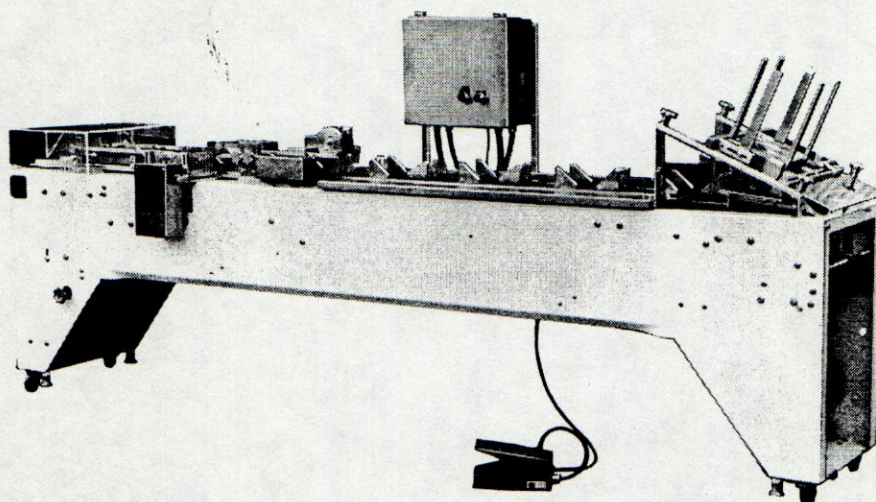
**Packaging - Processing**  
**Bid on Equipment**

1-847-683-7720

www.bid-on-equipment.com

Sanger, Calif. 93657

Phone: 209-875-5563



## MACHINE SIZE

Length - 127 ins.

Width - 20 $\frac{1}{4}$  ins.

Height - 33 $\frac{1}{2}$  ins.

## DRIVE

220-440 V. 3 Phase Mtr.  
Vari-Speed

Heavy Duty Vac. Pump

## ATTACHMENTS

Coder - Emboss

Coder - Ink Print

Product Conveyor

The ADCO MODEL 15-D CARTON CLOSING MACHINE is of good design and embodies the most up-to-date developments that we know of. It is built in the best possible manner for setting up and closing:

### TUCK END CARTONS

Edge lock

Reverse tuck

Center lock

### SEAL END CARTONS

Hot glue

Preapplied glue

Wax to wax

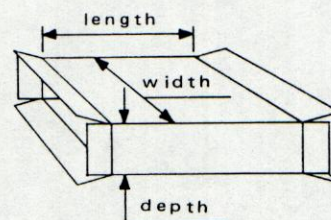
Poly to poly

MODEL 15-D is adjustable for cartons ranging:

depth 3/8 ins. - 2 $\frac{3}{4}$  ins.

length 5 ins. - 10 ins.

width 5 ins. - 10 ins.



Listed carton size is for reference only. Machines can be constructed to handle some variation in the listed size range.

Adco Cartoning Machines feature -- an epoxy coated, unitized formed steel frame with levelers and wheels (stainless steel frames available) -- the use of sealed ball bearings on all shafts and moving mechanisms -- the use of plated steel, stainless steel and aluminum on all critical parts -- and USDA approval.